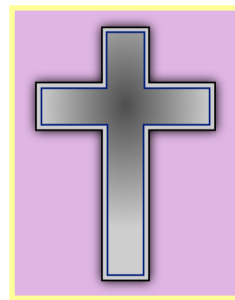


# Newsletter



**St Martin's CE Primary School** Issue 24: 25th April 2025

Class	Attendance %
Ash	88.8%
Beech	87.5%
Birch	91.5%
Chestnut	88.9%
Elm	92.1%
Holly	81.8%
Maple	84.7%
Oak	92.6%
Olive	82.4%
Rowan	95.4%
Sycamore	80.5%
Willow	81.4%

Dear Parents and Carers,

As the children of St Martins return from their Easter break, the children have settled in very well.

Each class has started working on tasks given by their teachers, from starting to read a new book for literacy to continuing to develop their creative skills.

All of the children have been happily engaged.

Written by Tamelia year 5

**If you have any safeguarding concerns please ask to speak to one of the following adults: Mr Rowden (Deputy Head, Designated Safeguarding lead) Miss Hodis (EYFS—Year 3 Lead), Mrs Coates (Headteacher), Miss Baxter (KS2 Lead) or Miss Higgins (Assistant Headteacher, SENDCo).**

Our school values:

During the week all the staff will be looking out for exceptional examples of when children are showing these values and they may be awarded a certificate in Friday's assembly.

What value did you show this week to your friends? Which value do you think you will be able to show next week?



## Good Samaritan Award



Good Samaritan Project

This weeks good Samaritan award goes to Zach for being helpful in breakfast club

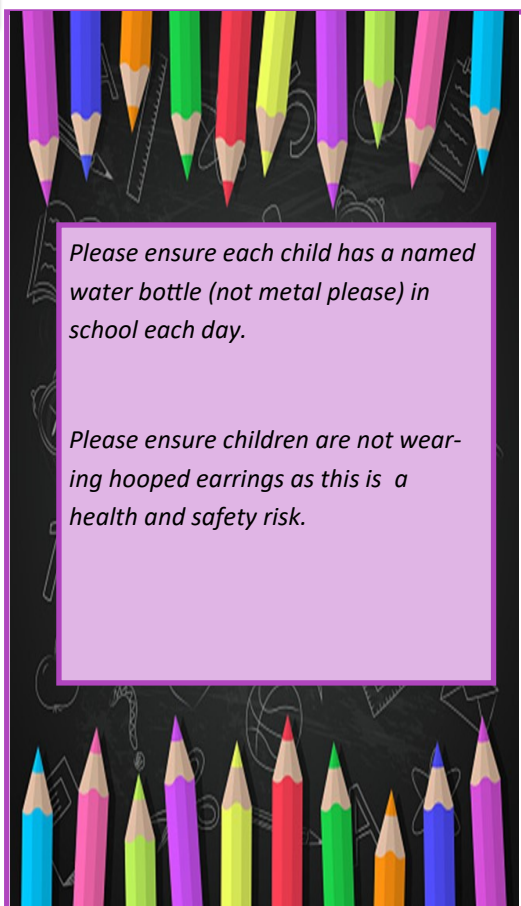
**Click on the link for the latest updates at St. Martin's Church**

<http://www.stmartinwestdrayton.org.uk>

*To enable spiritual growth and show the love of God to everyone.*



## Other news



## Stand Out Learners & Value Award

Class	Beacon of the Week	Value Award
Ash	Rayan	Adam
Beech	Alianza	Sophia-Mae
Birch	Tiffany	Musa
Chestnut	Jayansh	Darcie-Mae
Elm	Deniz	Wais
Oak	Francesca	Isla
Olive	Taiba	Oliver
Rowan	Jade	Aiden
Sycamore	Daros	Tilley
Willow	Sipan	Prisa

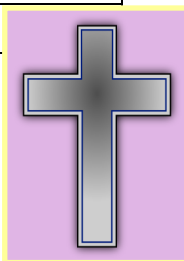
## Dates for the Diary:

### Whole School Events

5th May	Bank holiday—SCHOOL CLOSED
12th, 13th, 14th & 15th May	Year 6 SATS Breakfast from 8am in the hall — PTA Funded
23rd May	Cinema viewing (after school event) details to follow
23rd May	Non school uniform day—Please bring a bottle for the drinks tombola
26th—30th May	Half term
5th June	Dance festival
12th & 13th June	Fathers Day breakfast—8am to 8.45am—Ticketed event
13th June	St Martin's got talent
5th July	Summer Fair
7th—9th July	Year 6 Residential trip
18th July	Year 6 Leavers Party
22nd July	End of term—2pm finish

The Senior Leadership Team is made up of: Mrs Coates, Headteacher ; Mr Rowden, Deputy Headteacher; Miss Higgins, Assistant Head & SENDCo; Miss Hodis, Early Years , Year 1, 2 and 3 Leader. & Miss Baxter. If you need to raise a concern, please speak to your child's class teacher in the first instance. If you feel that you need to escalate to the next level, then please see your child's Key Phase Leader.

Let your light shine before others, that they may see your good deeds and glorify your Father in heaven. Matthew 5:16



# Attendance Award



Congratulations to Rowan class

who were last weeks class attendance winners with 95.4%.

# Playground improvements



# Childhood Asthma

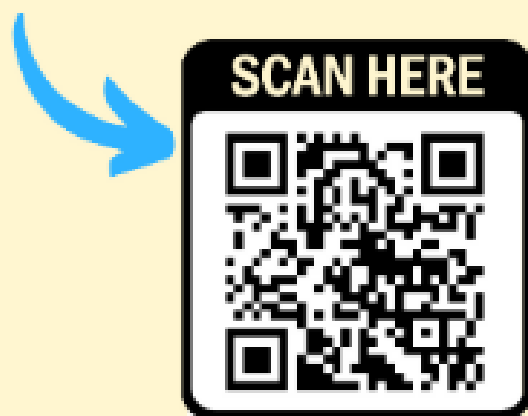
## FREE Online Workshops

**CONTACT THE TEAM TO RESERVE  
YOUR PLACE**

 **01895 543 437**

 **nhsnw1.myhealth@nhs.net**

Scan the code to contact the team  
and register your interest



### What's Included In The Workshop ?

What to do if your child is having an Asthma attack	Inhaler Techniques	Myth Busting	Common Triggers	Asthma Plans	Q&A
---	--------------------	--------------	-----------------	--------------	-----

**SESSIONS FACILITATED BY AN ASTHMA NURSE**

# GET INVOLVED SHAPING SERVICES!

We're inviting residents to join us in co-producing workshops in their area, working together to create solutions that truly address community needs.

WHY DO WE NEED YOUR HELP TODAY?

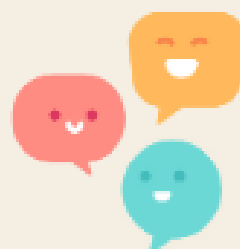
WE WANT TO HEAR FROM YOU! YOUR OPINIONS, FEELINGS AND EXPERIENCES DURING THESE OPEN DISCUSSIONS AND TRAINING.

## BE PART OF 3 CO-PRODUCTION WORKSHOPS



### 1. Reviewing Insights

Review past insights and concerns to uncover new opportunities.



### 2. Co-Production Training

Participate in a formal training session to learn best practices for co-producing with service providers and receive certification.



### 3. Solution Building

Put your training into action and help create meaningful solutions

**WORKSHOPS ARE DUE TO TAKE PLACE THROUGH MAY ALL PARTICIPANTS WILL RECEIVE GIFT VOUCHERS FOR THEIR TIME**

**REGISTER YOUR INTEREST TODAY**

email [Josh.thorpe@nhs.net](mailto:Josh.thorpe@nhs.net)

Or Scan the QR Code





**ST. MARTIN'S**  
CE Primary School

St Martin's CE Primary School  
Ofsted September 2023 – The school  
continues to be rated as a Good school  
“This is a friendly, kind and happy  
school”

## NURSERY APPLICATIONS

For parents with children due to start Nursery in September 2025

If your child turns 3 between 1 September 2021 and 31 August 2022  
you can make an application for our September 2025 intake.

We offer places for AM/PM 15 hours & 30-hour provision, Monday  
to Friday, Term-time.

For an application pack please call the School Office on 01895  
462350 or email: [stmartins@fraysacademytrust.org](mailto:stmartins@fraysacademytrust.org)

- <https://www.gov.uk/apply-30-hours-free-tax-free-childcare>
- <https://www.childcarechoices.gov.uk/>

**CLOSING DATE FOR APPLICATIONS: 31 MARCH 2025**





**CHILDREN, YOUNG PEOPLE  
AND FAMILIES**

# Explore our online care and support directory

Giving you access to  
thousands of services,  
events and organisations.



*Thriving healthy households*



**HILLINGDON**  
LONDON

[careandsupport.hillingdon.gov.uk/families](https://careandsupport.hillingdon.gov.uk/families)





**SPECIAL EDUCATIONAL  
NEEDS AND DISABILITIES**

## Explore our online care and support directory

Access to thousands of  
services to help children  
and families thrive.



*Thriving healthy households*



**HILLINGDON**  
LONDON

[careandsupport.hillingdon.gov.uk/SEND](https://careandsupport.hillingdon.gov.uk/SEND)

**NEW**



# AFTER SCHOOL CLUB

-  **MONDAY - FRIDAY (TERM TIME)**
-  **3.20PM - 6PM**
-  **ST MARTINS CE PRIMARY SCHOOL**
-  **FULL SESSION £15 (3.20 - 6PM)**
-  **PART SESSION £10 (3.20 - 4.30PM OR 4.20 - 6PM)**

Our after-school clubs provide a variety of enriching activities as well as a healthy snack.

\*Children attending extra-curricular clubs will be accompanied to wraparound care when the club finishes at 4.20pm.

SCAN TO BOOK



BOOK ONLINE AT:  
<https://thepsdgroup.magicbooking.co.uk>

Contact us for more information:

0203 397 7409

[info@thepsdgroup.org.uk](mailto:info@thepsdgroup.org.uk)

  @thepsdgroupuk



**ST MARTIN'S**  
CE Primary School

# School Nursing Shout Out

Primary Schools September – December  
2024 Autumn Term

## ASTHMA

**Asthma is a common lung condition that causes occasional breathing difficulties.**

It affects people of all ages and often starts in childhood, although it can also develop for the first time in adults.

There's currently no cure, but there are simple treatments that can help keep the symptoms under control so it does not have a big impact on your life.

### **3 ways to help manage your child's asthma well:**

- 1. Have an asthma action plan** – follow this plan to help manage your child's asthma, it will help reduce their chances of having an asthma attack!
- 2. Set reminders for your preventer** – if prescribed, remember this needs to be taken everyday to control your child's asthma!
- 3. Keep your reliver inhaler with you at all times** – easy access is needed for an emergency!

**NHS Central and North West London NHS Foundation Trust**

**Symptoms:** Tight chest, Struggling to speak, Coughing, Wheezing, Lack of energy

**Understand what triggers your child's asthma**

**Remember your child needs a spacer with their inhaler!**



Wellbeing for life

**Can't walk the whole way?**  
Try to park in the blue zone where permitted and walk the rest of the trip.

**Did you know?**  
Pollution levels are higher inside the car than outside.

**If you need to drive – don't idle!**  
It's a waste of money and pollutes the air that we breathe!

## Skip your ride, take a stride

### ST MARTIN'S PRIMARY SCHOOL WALK ZONE MAP

Let's make walking part of your daily routine!

- Key:**
- 5 minute walking zone
  - 10 minute walking zone
  - Bus stop
  - Zebra crossing
  - Pedestrian crossing
  - School entrance
  - Library



# Attendance Matters

0 DAYS OFF 190 DAYS ATTENDED	100%	★ <b>PERFECTION</b> ★ "EXCELLENT ACHIEVEMENT"
4 SCHOOL DAYS OFF EACH YEAR	98%	<b>IMPRESSIVE</b>
7 SCHOOL DAYS OFF EACH YEAR	96%	<b>NEARLY THERE</b>
9 SCHOOL DAYS OFF EACH YEAR	95%	<b>CAN BE IMPROVED</b> "INCREASE YOUR CHANCES OF BETTER GRADES"
11 SCHOOL DAYS OFF EACH YEAR	94%	<b>NEEDS TO IMPROVE</b>
20 SCHOOL DAYS OFF EACH YEAR	90%	<b>SERIOUS CONCERNS</b> "CLASSED AS A PERSISTENT ABSENTEE" referred to Education Welfare Service
30 SCHOOL DAYS OFF EACH YEAR	85%	<b>RISK OF PROSECUTION</b> <i>"can be damaging to a student's social, emotional and mental wellbeing"</i>
38 SCHOOL DAYS OFF EACH YEAR	80%	

## Every Day Counts